

Ciappa Valentina

Esercizio 1

Leggete la sequenza dal gel a voi fornito, inseritela in BLAST e provate ad identificarla utilizzando i due siti sotto indicati.

<http://blast.ncbi.nlm.nih.gov/>

<http://www.ebi.ac.uk/Tools/blast/>

Quale variante di BLAST utilizzate?

Quali parametri inserite e come variano i risultati in seguito al loro cambiamento?

X-Ray 1

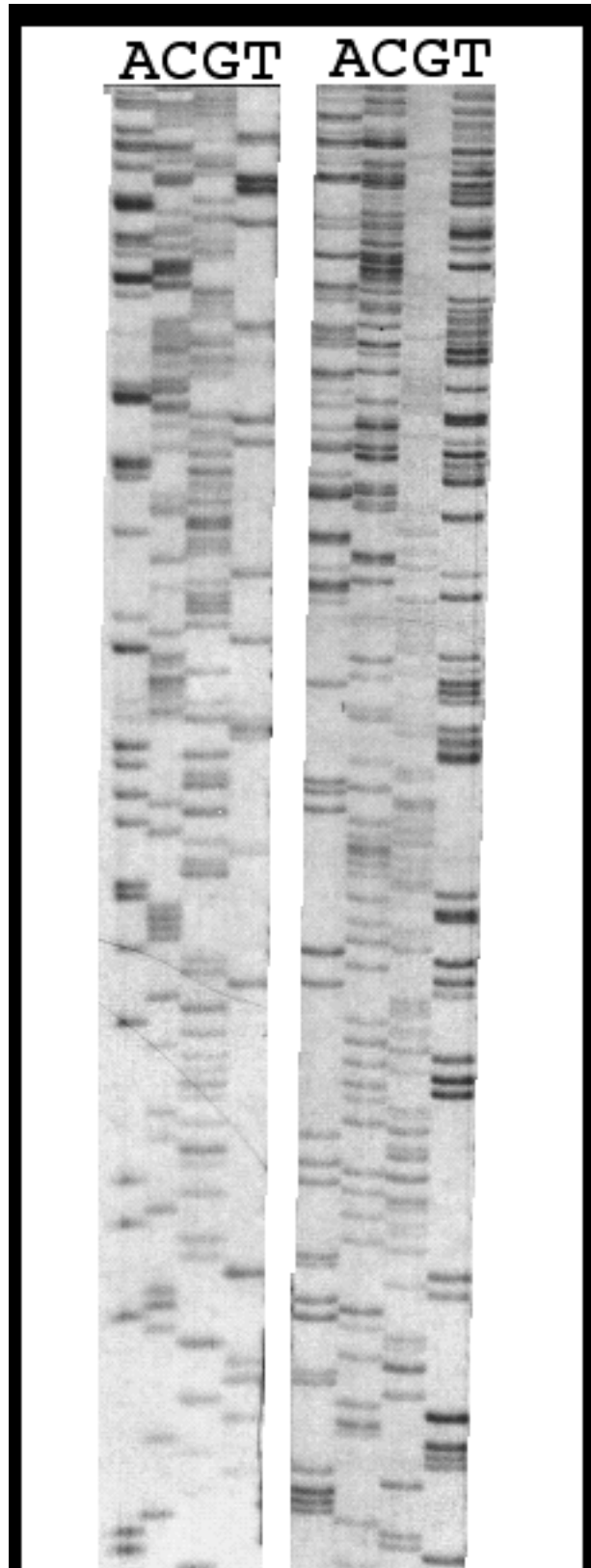
>CIAPPA

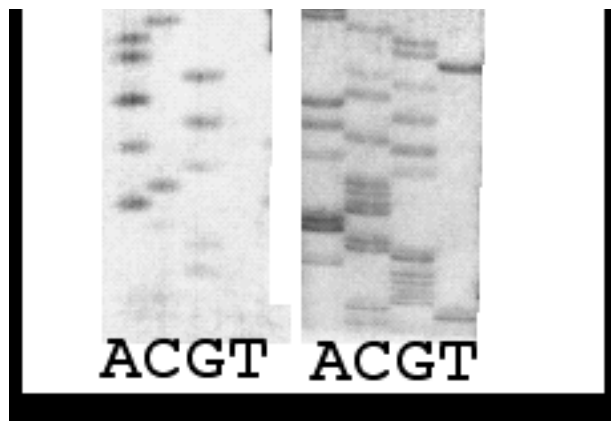
```
CTCGAGCACGAGAGAACTGCTGTTGCACCTGGACGAGGCGCGGGGCGAGCTGGA  
CCCCAAGGTGCAGCAGGAGATGCCCCCGCCATCGAGGGCGTTCGGCAGGCGCGA  
GAGCTGCTGAACACGCGCGCTCGGAGCACAGCAGCTGCAGATTCAGCGCATACG  
CAG
```

# X-Ray Film from Short and Long Sequencing Run

Can you figure out the source of the DNA?

---





**Figure 1.** Sequence from an unknown piece of DNA. A single sequencing reaction was loaded into four lanes, allowed to run for a couple hours (right set of 4 lanes; called the long run) and then more of the same reaction was loaded and run for another two hours (left set of 4 lanes; called the short run).

Two more examples of **autoradiograms (autorads)** you can view: [Example Two](#) and [Example Three](#).

Trupia Gabriella

Esercizio 2

Leggete la sequenza dal gel a voi fornito, inseritela in BLAST e provate ad identificarla utilizzando i due siti sotto indicati.

<http://blast.ncbi.nlm.nih.gov/>

<http://www.ebi.ac.uk/Tools/blast/>

Quale variante di BLAST utilizzate?

Quali parametri inserite e come variano i risultati in seguito al loro cambiamento?

X-Ray 3

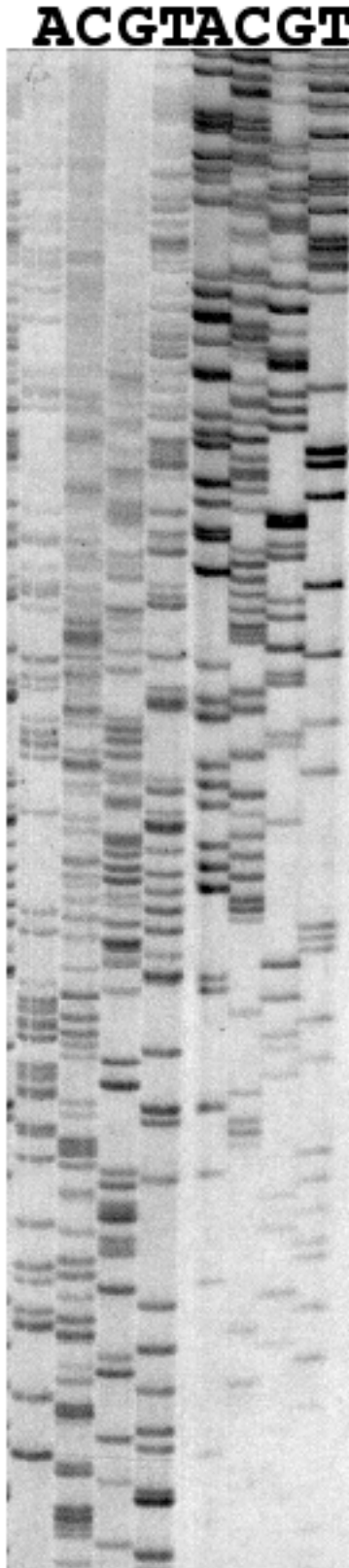
>TRUPIA

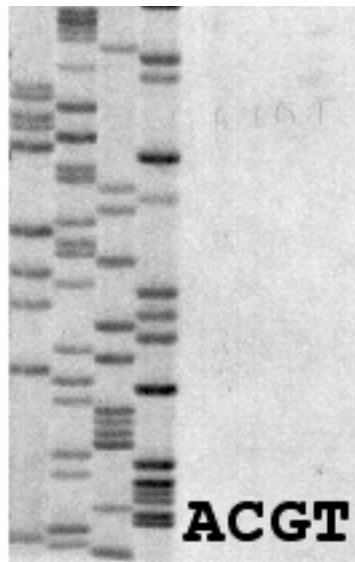
```
GCACTTGTTTCTCGGGGCTCAGCTGTATCAGGCACGTCCGGTACAACAATCTGCCC  
CTCTGCCCCTTGCCATGTCCATCGCGTCACATCGACACGGGCAGGCGTGCACCA  
TCTCAGAAGTCACACAACGTTCGTGGCATGCTCGCTGTGCCTGT
```

# X-Ray Film from Short and Long Sequencing Run

Can you figure out the source of the DNA?

---





**Figure 1.** Sequence from an unknown piece of DNA. A single sequencing reaction was loaded into four lanes, allowed to run for a couple hours (right set of 4 lanes; called the long run) and then more of the same reaction was loaded and run for another two hours (left set of 4 lanes; called the short run).

Two more examples of **autoradiograms (autorads)** you can view: [Example One](#) and [Example Two](#).

Galvagno Maria

Esercizio 3

Leggete la sequenza dal tracciato a voi fornito, inseritela in BLAST e provate ad identificarla utilizzando i due siti sotto indicati.

<http://blast.ncbi.nlm.nih.gov/>

<http://www.ebi.ac.uk/Tools/blast/>

Quale variante di BLAST utilizzate?

Quali parametri inserite e come variano i risultati in seguito al loro cambiamento?